

# AGILENT CAPILLARY GC COLUMNS

- Wide range of standard GC phases
- Low bleed phases for GC-MS
- Speciality phases
- Custom columns
- Non-bonded, bonded and PLOT phases

The acquisition of J&W Scientific by Agilent Technologies has led to the integration of products within the two capillary GC ranges (DB and HP). This has resulted in the combined product range offering more choice, whilst maintaining high standards of manufacturing and quality control. All capillary columns are now sold under the J&W Scientific brand name within Agilent Technologies.

A selection of the most popular phases are listed in Table 1. Columns are available with a wide range of lengths, inner diameters and film thicknesses.

Table 1<sup>1</sup>

Low Polarity Columns	DB-1, DB-1ms, HP-1, HP-1ms, DB-5, DB-5ms, HP-5, HP-5ms, DB-1ht, DB-5ht, DB-XLB
Mid Polarity Columns	DB-35, DB-35ms, HP-35, DB-17, DB-17ms, DB-17ht, DB-200, DB-210, DB-624, DB-1301, DB-1701
High Polarity Columns	DB-23, DB-225 Polyethylene glycol phases:- HP-Innowax, DB-Wax, DB-WAXetr, HP-FFAP, DB-FFAP

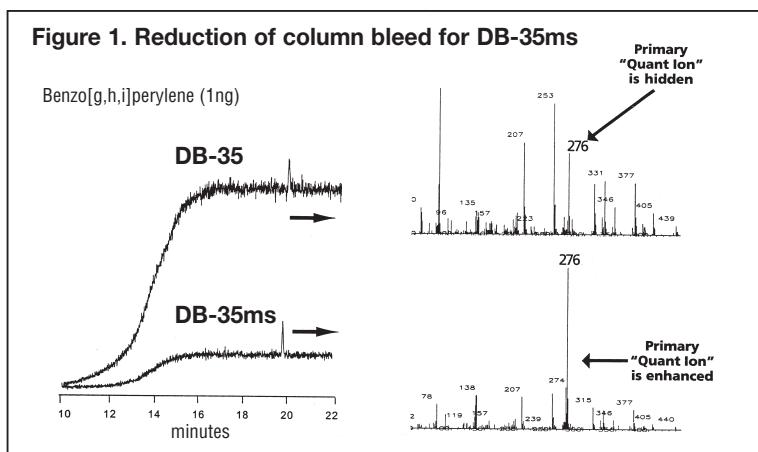
<sup>1</sup> Other phases are available - please contact Hichrom for further information

## Columns for GC-MS

A range of 'low-bleed' columns is specially produced for GC-MS analyses. Optimized manufacturing processes result in phases which show improved spectral integrity and greater signal-to-noise ratios for increased sensitivity (see Figure 1). Proprietary deactivation techniques may also result in improvement of thermal stability and increased temperature limits.

These 'low-bleed' columns include:

- DB-1ms, HP-1ms, DB-5ms, HP-5ms, DB-XLB, DB-35ms, DM-17ms, DB-225ms.



## Application Specific Columns

A range of capillary columns is available for specific applications in environmental, petroleum, forensic and chiral analyses. Table 2 highlights a few of these phases.

## Custom Columns

Custom made capillary columns of non standard dimensions are available on request.

## GC Technical Support

In addition to troubleshooting and method development advice, Hichrom offers a range of new product information and application notes. Agilent Technologies offer a range of e-seminars via their website.

Contact Hichrom for further details.

Table 2

Application	Phase
Volatiles	DB-VRX, DB-624
Pesticides	HP-PAS5, DB-XLB
Drugs of abuse	DB-EVDX
Blood alcohol	DB-ALC1, DB-ALC2
Petroleum	HP-PONA, DB-Petro
Chiral	Cyclosil-B, Cyclodex-B

## Packed GC Columns and GC Accessories

Hichrom can also supply packed GC columns and a full range of accessories for GC, including septa, ferrules, liners, vials, syringes etc.

Please contact Hichrom for further information.

## AGILENT CAPILLARY GC COLUMNS (continued)

The ordering information below relates to a selection of the more popular Agilent GC phases and dimensions. All other Agilent GC columns can be supplied.

### Ordering Information

Column Dimensions			DB-1ms	HP-1ms	DB-5ms	HP-5ms	Price
I.D. (mm)	Length (m)	Film (µm)					
0.20	12	0.33	128-0112	-	128-5512	19091S-101	£200
0.20	25	0.33	128-0122	19091S-602	128-5522	19091S-102	£307
0.20	50	0.33	-	-	128-5552	19091S-105	£517
0.25	15	0.25	122-0112	19091S-931 <sup>1</sup>	122-5512	19091S-431	£226
0.25	30	0.10	122-0131	19091S-833	122-5531	19091S-333	£371
0.25	30	0.25	122-0132	19091S-933	122-5532	19091S-433	£371
0.25	30	1.00	-	19091S-733 <sup>2</sup>	122-5533	19091S-233	£371
0.25	60	0.25	122-0162	19091S-936	122-5562	19091S-436	£632
0.32	15	0.25	123-0112	19091S-911	123-5512	-	£245
0.32	30	0.10	123-0131	-	123-5531	19091S-313	£400
0.32	30	0.25	123-0132	19091S-913	123-5532	19091S-413	£400
0.32	30	1.00	-	19091S-713 <sup>3</sup>	123-5533	19091S-213	£400
0.32	60	0.25	123-0162	19091S-916	123-5562	19091S-416	£688
0.53	15	0.50	-	-	-	-	-
0.53	15	1.50	-	-	125-5512	-	£251
0.53	30	1.00	-	-	125-553J	-	£440
0.53	30	1.50	-	-	125-5532	-	£440

<sup>1</sup> £214<sup>2</sup> £373<sup>3</sup> £377

I.D. (mm)	Length (m)	Film (µm)	DB-1	HP-1	DB-5	HP-5	Price
0.18	10	0.18	121-1012	-	121-5012	-	£174
0.18	20	0.18	121-1022	-	121-5022	-	£276
0.18	40	0.40	121-1043	-	-	-	£510
0.25	15	0.10	122-1011	19091Z-331	122-5011	-	£192
0.25	15	0.25	122-1012	19091Z-431	122-5012	19091J-431	£192
0.25	30	0.10	122-1031 <sup>1</sup>	19091Z-333 <sup>1</sup>	122-5031	19091J-333	£322
0.25	30	0.25	122-1032	19091Z-433	122-5032	19091J-433	£322
0.25	30	1.00	122-1033	19091Z-233	122-5033	19091J-233	£322
0.25	60	0.25	122-1062	19091Z-436	122-5062	19091J-436	£565
0.25	60	1.00	122-1063	19091Z-236	122-5063	19091J-236	£565
0.32	15	0.25	123-1012	19091Z-411	123-5012	19091J-411	£208
0.32	15	1.00	123-1013	19091Z-211	123-5013	-	£208
0.32	30	0.10	123-1031	19091Z-313	123-5031	19091J-313	£348
0.32	30	0.25	123-1032	19091Z-413	123-5032	19091J-413	£348
0.32	30	1.00	123-1033	19091Z-213	123-5033	19091J-213	£348
0.32	60	0.25	123-1062	19091Z-416	123-5062	19091J-416	£616
0.53	15	0.50	125-1017	-	125-5017	-	£213
0.53	15	1.00	125-101J	-	125-501J	-	£213
0.53	15	5.00	125-1015	19095Z-621	-	19095J-621	£213
0.53	30	0.25	125-103K	-	125-503K	-	£386
0.53	30	1.00	125-103J	-	125-503J	-	£386
0.53	30	5.00	125-1035	19095Z-623	125-5035	19095J-623	£386
0.53	60	1.00	125-106J	-	-	-	£620
0.53	60	5.00	125-1065	19095Z-626	125-5065	-	£620

<sup>1</sup> £314

Please contact Hichrom for details of GC columns of other phases and dimensions.