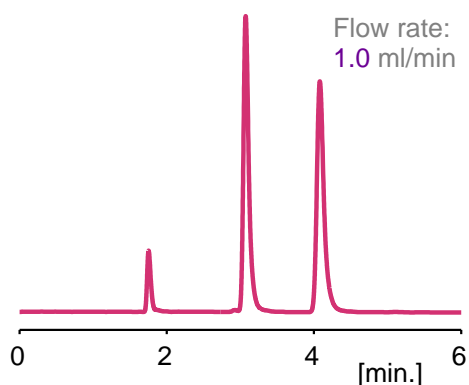


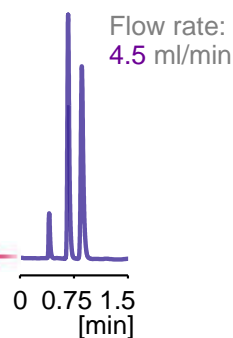
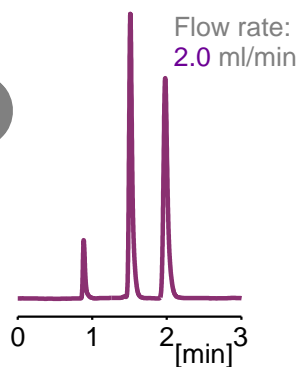
# Kromasil Chiral

Designed to stretch the limits

## Fast analytical chromatography



Solute: Träger's base  
Mobile phase: Heptane/2-Propanol/DEA (90/10/0.1)  
Stationary phase: **Kromasil AmyCoat, 3 µm**  
Column size: 4.6 x 150 mm  
Temperature: 22 °C  
Detection: UV 220 nm



Baseline separation in less than 1 minute

\*: Offer for end-users, valid when acquiring 2 chiral analytical columns, get the cheapest for free. Valid until end of June 2011.

To order contact  
Authorised Distributor:



**Hichrom Limited**

Tel: 0118 930 3660

Fax: 0118 932 3484

Email: sales@hichrom.co.uk

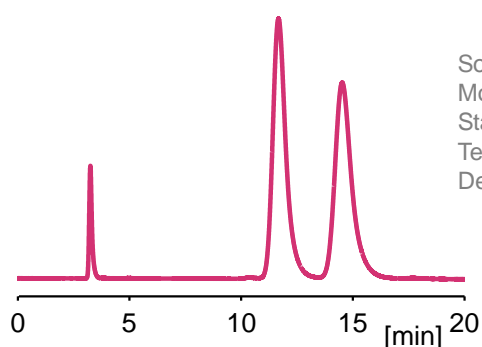


# Kromasil Chiral

Designed to stretch the limits

*Easy to scale up*

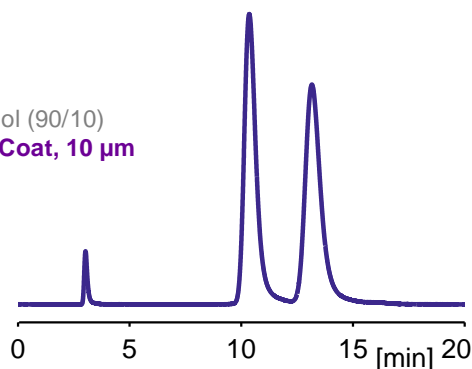
Analytical column



Solute: trifluoroanthyrethanol  
Mobile phase: Heptane/2-Propanol (90/10)  
Stationary phase: **Kromasil AmyCoat, 10 µm**  
Temperature: 20 °C  
Detection: UV 254 nm

Column size: **4.6 x 150 mm**  
Flow rate: 0.5 ml/min

DAC column



DAC system: **NovaSep Pack-n-Sep 50mm i.d.**  
Bed length: 135 mm  
Flow rate: 60 ml/min

- unique silica matrix ▶ mechanically strong ▶ longer lifetime
- wide range of particles ▶ consistent performance ▶ easier to scale up
- unique coating method ▶ higher loadability ▶ higher productivity

\*: Offer for end-users, valid when acquiring 2 chiral analytical columns, get the cheapest for free. Valid until end of June 2011.

To order contact  
Authorised Distributor:



**Hichrom Limited**

Tel: 0118 930 3660

Fax: 0118 932 3484

Email: sales@hichrom.co.uk

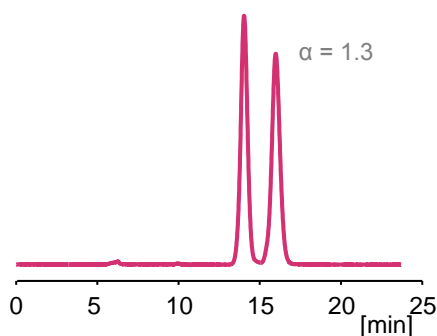


# Kromasil Chiral

Designed to stretch the limits

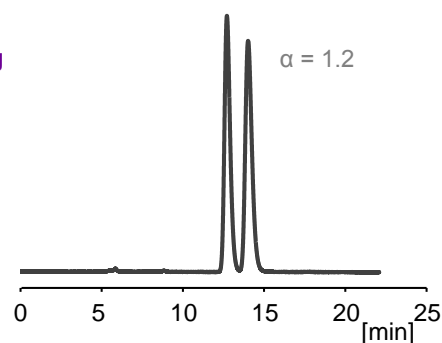
## Increase loadability

### Kromasil CelluCoat, 10 $\mu$ m

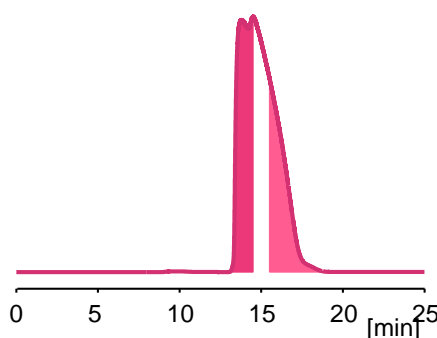


Analytical injection: 20  $\mu$ g  
detection: UV 300 nm

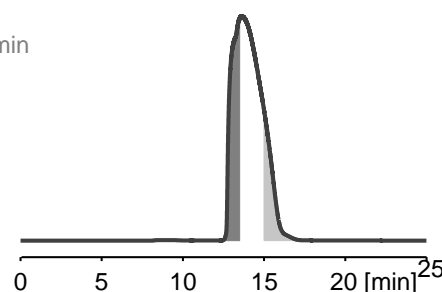
### CHIRALCEL OD, 10 $\mu$ m



Preparative injection: 5 mg  
collected fractions size: 0.5 min  
detection: UV 340 nm



similar purity,  
twice the yield



Enantiomer 1	Enantiomer 2		Enantiomer 1	Enantiomer 2
91.2	94.4	Purity [%]	91.4	96.6
73.3	50.1	Yield [%]	46.7	24.9

Common conditions: solute: naproxen, mobile phase: heptane/2-propanol/TFA (90/10/0.1), column size: 4.6 x 250 mm, Flow rate: 0.5 ml/min, temperature: 25°C

\*: Offer for end-users, valid when acquiring 2 chiral analytical columns, get the cheapest for free. Valid until end of June 2011.

To order contact  
Authorised Distributor:



**Hichrom Limited**

Tel: 0118 930 3660

Fax: 0118 932 3484

Email: sales@hichrom.co.uk



**AkzoNobel**