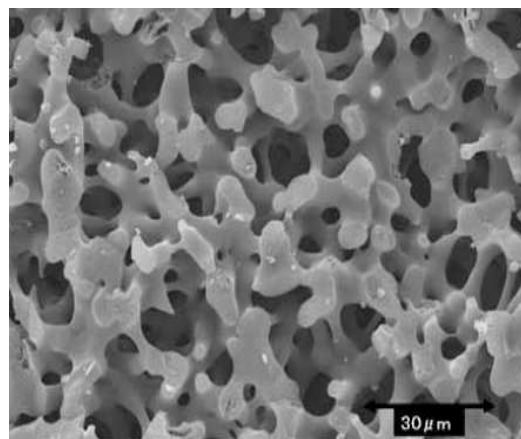


Monolithic silica extraction tips (MonoTip™ C18) for sample preparation

MonoTip™ pipette tips are designed for the purification and enrichment of femtomole to micromole levels of peptides and proteins prior to MALDI-MS and LC-MS analyses. Monolithic silica consists of a double pore structure having continuous through-pores and silica skeletons which have meso-pores. Silica skeletons make a network structure as shown on the right. The unique monolithic silica structure contributes to low pressure-drop and strong analyte-to-surface interactions. In MonoTip™, the monolithic silica is directly attached to the inner surface of the 10µL tip (used for small sample volumes) and 200µL tips (used for larger sample volumes).



MonoTip™ C18

Monolithic silica properties and chemical modification

Silica type	: High purity sol-gel silica gel
Specific surface area	: 200m ² /g
Through pore size	: 10~20µm
Meso pore size	: 20nm
Bonded phase	: Octadecyl group
Carbon load	: 12%
Tip volume	: 200µL
Sample capacity	: 100µg (Angiotensin II)
Application scope (Molecular weight)	: ~40,000



MonoTip™ mini C18

Monolithic silica properties and chemical modification

Silica type	: High purity sol-gel silica gel
Specific surface area	: 200m ² /g
Through pore size	: 20~30µm
Meso pore size	: 15nm
Bonded phase	: Octadecyl group
Carbon load	: 12%
Tip volume	: 10µL
Sample capacity	: 5µg (Angiotensin II)
Application scope (Molecular weight)	: ~5,000



Licensed by Merck KGaA, Darmstadt, Germany

Hichrom Limited

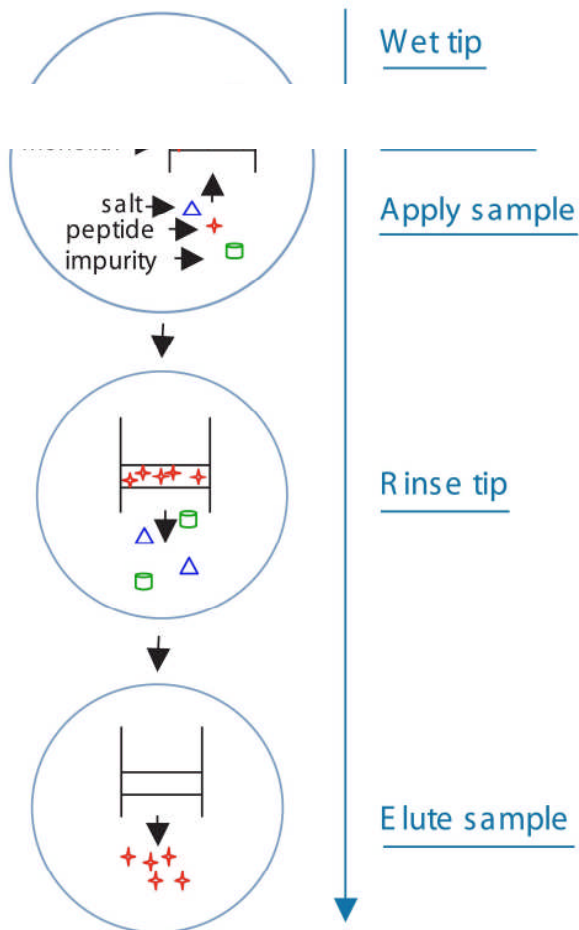
1 The Markham Centre, Station Road, Theale, Reading, RG7 4PE UK

TEL: +44 (0) 118 930 3660 FAX: +44 (0) 118 932 3484 EMAIL: technical@hichrom.co.uk

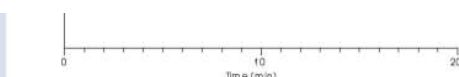
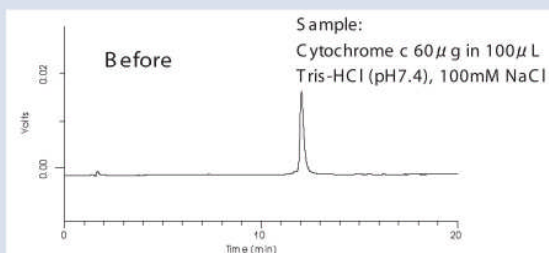
Features

- : Faster sample preparation
- : Low sample loss
- : No contamination from monolithic silica
- : Large sample capacity

Scheme of removal salt, concentration



High recovery with MonoTip™ C18



Analytical conditions

Column: Inertsil® WP300 C18 (150 X 2.1mm I.D.)
 Elution: A: water (0.1%TFA)
 B: Acetonitrile/water=90/10 (0.1%TFA)
 A/B = 80/20-(20min)-40/60
 Flow rate=0.3mL/min
 Injection: 5 μL
 Detector: UV280nm



Ordering Information

Description	Tip Volume	pcs	Cat. No.
MonoTip™ C18	200μL	8 pcs	5010-21001
		96 well plate	5010-21000
MonoTip™ mini C18	10μL	8 pcs	5010-21201
		96 well plate	5010-21200

Hichrom Limited
 1 The Markham Centre, Station Road, Theale, Reading, RG7 4PE UK
 TEL: +44 (0) 118 930 3660 FAX: +44 (0) 118 932 3484
 EMAIL: technical@hichrom.co.uk

